

## A NEW HOUSE, 1998 *Gulfstream, Florida*

*Project Team:* Richard Sammons, Anne Fairfax, William Oster, and Peter Mines  
(Digby Bridges Marsh Architects)  
*Contractor:* Davis General Contracting Corp., Palm Beach, Florida  
*Architect of Record:* Digby Bridges Marsh Architects, Del Ray, Florida  
*Landscape Architect:* Morgan Wheelock, Boston, Massachusetts  
*Photographer:* Durston Saylor, New York, New York

### VIEW OF PERGOLA AND HOUSE (*above left*)

This new house, built in the British-Colonial manner, was designed for a spectacular oceanfront setting next to Addison Mizner's Gulfstream Country Club and the 18th fairway. Taking a cue from the owner's affection for the architecture of Thomas Jefferson, Chippendale railings, oculus windows, and octagon-shaped rooms were incorporated into the design.

### VIEW OF LOGGIA AND VERANDA (*above right*)

On the second level, sleeping porches flank the loggia on the garden façade and provide a time-tested method of keeping cool on warm nights. The magnificent banyan tree, which was saved on the site, fills the garden with its presence and shades the entrance.

### VIEW THROUGH THE LOGGIA (*bottom right*)

A deliberate attempt was made to use stucco and exterior stucco mouldings in a traditional manner. Throughout the design, elliptical arches are used as a unifying element.



## Smith Architectural Group, Inc.

*Palm Beach, Florida*

A native of Chicago, Principal Jeffery Smith's love of architecture grew from his appreciation of the works of Frank Lloyd Wright and Louis Sullivan. A 1980 graduate of Louisiana State University, his formative years were spent on the island of Palm Beach where he was exposed to the Mediterranean villas by such noted architects as Maurice Fatio and Addison Mizner.

Smith Architectural Group, Inc. of Palm Beach was founded in 1989 and is rooted in the pursuits of historical preservation and Mediterranean-style architecture. The firm was built on the tenets of classical design and strives to compliment past noteworthy island architectural firms of Mizner, Fatio and Trainor, Wyeth, King and Johnson, and John Volk.

The work by Smith's office is predominately large-scale residential architecture, with designs ranging from formal-classical partis to shingle-style structures. The melding of exterior and interior is of paramount interest to the firm; its interior architecture department creates environments relative to the architecture and the client's desires.

Donald E. Kino graduated with a Masters Degree in Historic Preservation from the University of Florida, and is vice president of the firm. Angelo Davila, a graduate of Pratt Institute, is vice president of architectural interiors.

The firm's work has been published in *Architectural Digest*, *House & Garden*, and *Elle Décor* among others.



### A PRIVATE RESIDENCE, 1998

*Palm Beach, Florida*

*Project Team:* Jeffery W. Smith, Donald E. Kino, and Angelo Davila  
*Landscape Architect:* Mario Nievera, Palm Beach, Florida  
*General Contractor:* Hugh Davis, Davis General Contracting, West Palm Beach, Florida  
*Stonework:* Herpel Cast Stone, West Palm Beach, Florida  
*Interior Designer:* Lise Wechsler, Palm Beach, Florida  
*Photography:* Kim Sargent, Palm Beach Gardens, Florida

This cast stone-accented Mediterranean structure sits atop a sloping bed of Bermuda grass, which ends markedly at the sands of the Atlantic Ocean. The residence serves as a buffer between the life of the street and the tranquility of the warm blue waters.

The design calls for visitors to leave the distractions of everyday life at the motor court and through a gated portal, enter the serenity of a tropical garden, the true foyer to the house. The visitor then encounters a more formal garden with a fountain before proceeding into the entry loggia. It is from this airy, yet protected space, that one finally enters the residence proper.

The interior foyer introduces the great hall and the eastern lawn with the waters beyond. The spatial sequence of the house is linked linearly along the shoreline in order to take advantage of the ocean views. A sheltered courtyard loggia serves as an informal gathering spot and allows access to the lap pool; designed as both a reflecting pool and fountain. Passageways connect the loggia to the kitchen wing on the north and the guest wing on the south. The grand hall and ocean loggia connect to the master wing which terminates the house at the north of the property.

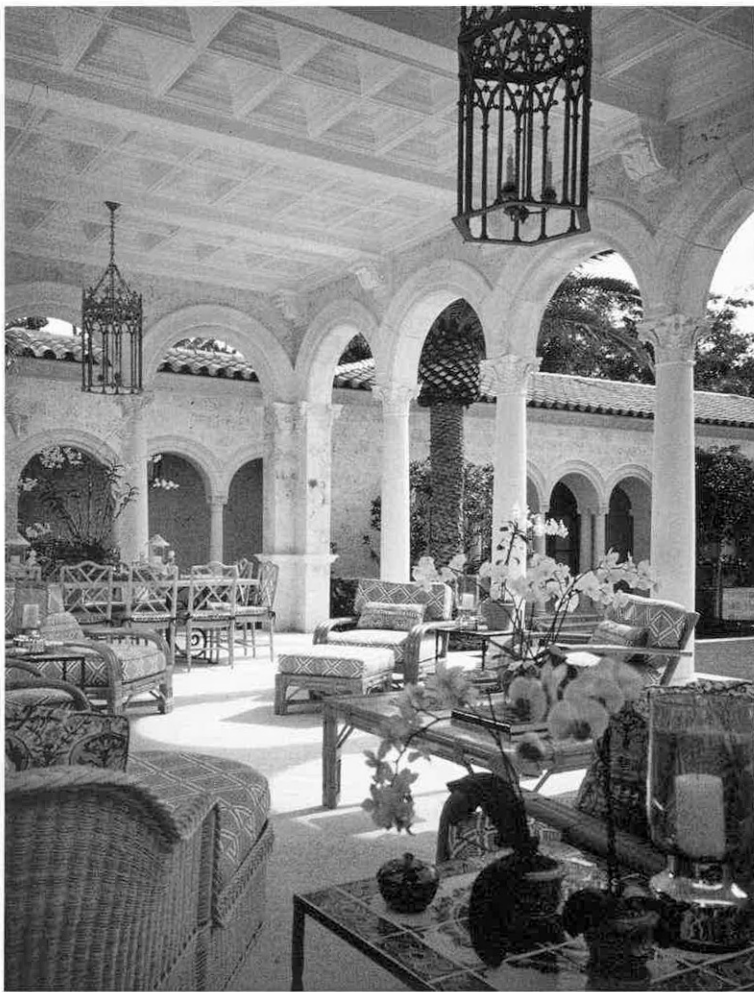
#### INTERIOR VIEW OF LIVING ROOM (*left*)

The beamed ceiling of the living room appears boldly against the Venetian plastered walls.

#### OCEAN FAÇADE (*above*)

The rhythm of this façade creates intimate outdoor spaces from which one can enjoy the balmy ocean breezes.





## LA FOLLIA, 1996 Palm Beach, Florida

*Owner:* Terry Allen Kramer  
*Project Team:* Jeffery W. Smith, Donald E. Kino, and Angelo Davila  
*Landscape Architect:* Mario Nievera for Morgan Wheelock, Palm Beach, Florida  
*General Contractor:* Hugh Davis, Davis General Contracting, West Palm Beach, Florida  
*Millwork:* Advanced Millwork, Louisiana  
*Stonework:* K & T Stonework and Herpel Cast Stone, West Palm Beach, Florida  
*Interior Designer:* Pauline Boardman Pitt, New York, New York  
*Photography:* Kim Sargent, Palm Beach Gardens, Florida

The site, situated between the Atlantic Ocean of Florida's east coast and the intracoastal waterway presented the opportunity to create a residence reminiscent of the grand estates prevalent in the area, which would capture the distinct views of sunrise and sunsets over the water.

The traditional "H" plan provides unobstructed views of the ocean yet serves to protect the pool courtyard area and the gardens from the sometimes harsh breeze. The entry sequence is enhanced by a winding main drive that serves to create a romantic transition between the street, the motor court, and porte cochere. The coral stone-clad

entry foyer buffers the interior from exterior and links the axial great hall to all of the major public spaces which feed from it. Loggias connect the guest wings to the great hall of the main structure as well as incorporating views and access to the pool courtyard.

The use of coral stone is reflective of the indigenous material found on the reefs located in the shallows just off the property. The incorporation of an Italianate style serves to develop a formality which anchors the structure to the site and creates a sense of timelessness.

### VIEW TOWARDS POOL COURTYARD FROM POOL LOGGIA (*above left*)

The pool loggia provides the user with a relaxed informal space from which to survey the tropical courtyard

### MORNING ROOM ELEVATION WITH OCEAN BEYOND (*above right*)

The morning room was designed in a classical manner yet, with a whimsical application of a tented ceiling to convey a more informal tone.

### OCEAN FAÇADE (*opposite page*)

The coconut palms stand in sharp contrast to the coral stone façade of this Italian Renaissance residence.

